

TAMH-SMD TYPE (Rev. 1.0)



Features

- * High current, low loss of iron powder core
- * Low profile for machine placement
- * Minimize electromagnetic interference
- * Suppress common mode noise
- * Prevent EMI effect via precise impedance

Product Identification

TAMH 1360 - 4R7 M
 1 2 3 4

1. Product Code
2. Size Code
3. Inductance: 4.7uH
4. Tolerance: M=±20%

Applications

- * DC/DC converters, etc
- * Power supply for VTRs
- * LCD televisions

Operating & Storage Condition

- * Operating Temp :Stand Type:-55 to +125°C
- * Storage Temp : Stand Type -20 to +35°C
- * Storage Life Time :12 Months @25°C,RH 65%

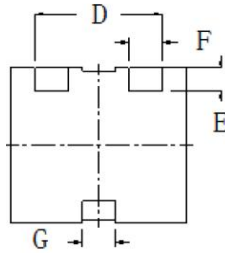
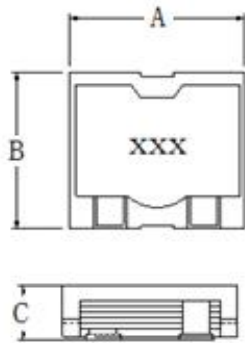
Test Equipment

- * HP4284A,HP42841A-L,IDC,Q,RDC
- * HP8753D NETWORK ANALYZER-SRF

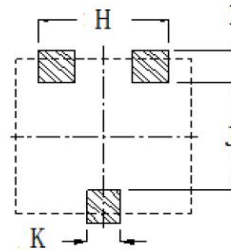
Standard Atmospheric Conditions

- * Ambient Temp : 20+/-15°C
- * Relative Humidity : 65±20%

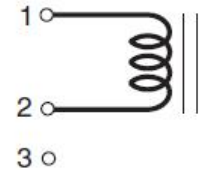
Dimension & Recommended PAD Layout: [mm]



BOTTOM VIEW



PAD LAYOUT



SCHEMATIC

Size Code	A(max.)	B(max.)	C(max.)	D(±0.5)	E(ref.)	F(ref.)	G(ref.)	H(ref.)	I(ref.)	J(ref.)	K(ref.)
1052	10.6	10.6	5.2	8.0	2.0	2.5	1.5	8.2	2.5	5.8	2.4
1360	13.0	13.5	5.8	9.4	2.0	2.5	2.5	9.0	2.5	8.0	3.0
1390	13.0	13.5	9.0	9.4	2.0	2.5	2.5	9.0	2.5	8.0	3.0
1480	14.9	15.1	8.3	11.8	1.8	2.8	2.5	13.0	2.7	10.0	3.5
1412	14.9	15.1	12.2	11.8	1.8	2.8	2.5	13.0	2.7	10.0	3.5



TAMH-SMD TYPE (Rev. 1.0)

Electrical Characteristics

P/N	L (μ H)	Tolerance	DCR (m Ω) typ.	DCR (m Ω) max.	Isat (A) max. @L-Drop 30%	Irms (A) max. @ Δ T=45°C
TAMH1052-R80M	0.80	20%	3.80	4.00	25.6	16.3
TAMH1052-1R0M	1.00	20%	3.80	4.00	17.5	16.3
TAMH1052-1R2M	1.20	20%	5.40	6.00	21.3	15.0
TAMH1052-1R3M	1.30	20%	3.80	4.00	17.2	16.3
TAMH1052-1R5M	1.50	20%	3.80	4.00	14.5	15.0
TAMH1052-1R8M	1.80	20%	5.40	6.00	14.3	15.0
TAMH1052-2R0M	2.00	20%	7.80	9.00	16.2	11.5
TAMH1052-2R2M	2.20	20%	3.80	4.00	10.0	16.3
TAMH1052-2R5M	2.50	20%	5.40	7.50	12.1	12.0
TAMH1052-3R2M	3.20	20%	5.40	6.00	8.5	15.0
TAMH1052-4R0M	4.00	20%	7.80	9.00	8.8	11.5
TAMH1052-4R3M	4.30	20%	5.40	7.50	7.0	12.0
TAMH1052-5R7M	5.70	20%	7.80	9.00	6.0	11.5
TAMH1360-R33M	0.33	20%	0.77	0.86	43.0	16.9
TAMH1360-R65M	0.65	20%	0.77	0.85	28.0	16.9
TAMH1360-1R0M	1.00	20%	2.36	2.60	33.5	13.0
TAMH1360-1R8M	1.80	20%	2.36	2.60	20.0	13.0
TAMH1360-2R7M	2.70	20%	2.36	2.60	14.0	13.0
TAMH1360-4R0M	4.00	20%	5.50	6.05	13.0	9.4
TAMH1360-4R7M	4.70	20%	5.50	6.05	12.0	9.4
TAMH1360-6R0M	6.00	20%	5.50	6.06	9.5	9.4
TAMH1360-8R0M	8.00	20%	9.83	10.81	9.0	7.6
TAMH1360-100M	10.00	20%	9.83	10.81	7.5	7.2
TAMH1390-100M	10.00	20%	13.7	15.0	13.1	9.2
TAMH1390-150M	15.00	20%	13.7	15.0	8.6	9.2
TAMH1390-220M	22.00	20%	21.0	23.1	7.3	7.7
TAMH1390-330M	33.00	20%	21.0	23.1	4.7	7.7
TAMH1390-470M	47.00	20%	21.0	23.1	3.2	7.7
TAMH1480-R40M	0.4	20%	1.0	1.2	66.0	23.0
TAMH1480-R90M	0.9	20%	1.2	1.5	45.0	21.5
TAMH1480-1R5M	1.5	20%	1.7	2.0	34.0	20.0
TAMH1480-2R4M	2.4	20%	2.7	3.2	28.0	17.5
TAMH1480-3R4M	3.4	20%	4.1	5.0	23.0	16.0
TAMH1480-4R7M	4.7	20%	5.0	6.0	19.0	12.5
TAMH1480-6R1M	6.1	20%	6.5	7.8	18.5	11.0
TAMH1480-7R7M	7.7	20%	8.2	9.9	15.5	10.0
TAMH1480-9R5M	9.5	20%	11.1	13.3	14.0	8.5
TAMH1480-100M	10.0	20%	8.2	9.9	11.5	10.0
TAMH1480-120M	12.0	20%	11.1	13.3	10.0	8.5
TAMH1480-470M	47.0	20%	22.3	27.0	3.0	2.5
TAMH1412-7R4M	7.4	20%	3.7	4.5	10.8	13.0
TAMH1412-100M	10.0	20%	4.5	5.4	9.2	12.5
TAMH1412-120M	12.0	20%	6.3	7.5	8.5	10.3
TAMH1412-150M	15.0	20%	7.4	8.4	8.0	9.6
TAMH1412-180M	18.0	20%	8.1	9.8	7.2	9.0
TAMH1412-220M	22.0	20%	9.4	11.3	6.4	8.3

* Test Condition: @100KHz/ 0.1V

* Irms DC current (A) that will cause an approximate Δ T of 45°C

* Isat DC current (A) that will cause L to drop approximately 30%



TAMH-DIP TYPE (Rev. 1.0)



Features

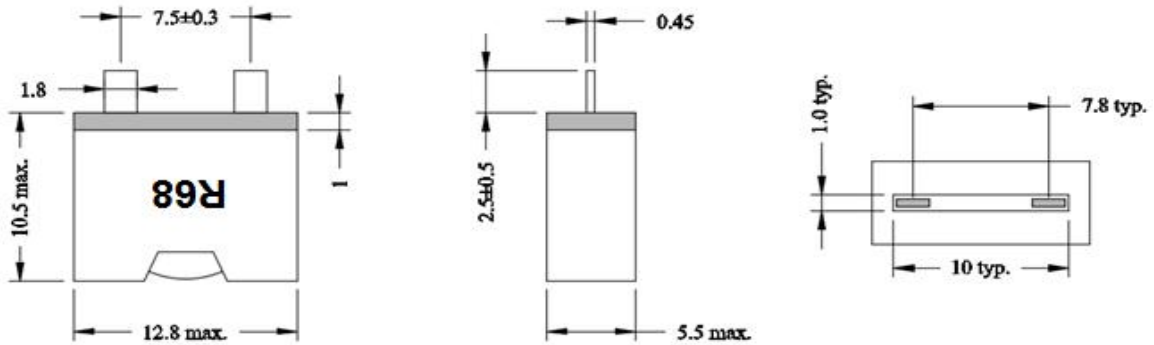
- * High current, low loss of ferrite core
- * Extremely low DCR; Current handling to >100 Amps
- * Custom design available

Product Identification

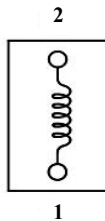
TAMH 1250 - R68 M
 1 2 3 4

1. Product Code
2. Size Code
3. Inductance: 0.68uH
4. Tolerance: M = ±20%

Dimension: [mm]



Schematic:



Electrical Characteristics

P/N	L (uH)	Tolerance (±%)	DCR (mΩ) max.	Isat (A) max.	Irms (A) max.	Wire Diameter (mm)
TAMH1250-R68M	0.68	20	1.85	45.0	23.0	0.45*1.8*2.75TS
TAMH1250-1R0M	1.00	20	1.92	37.0	23.0	0.45*1.8*2.75TS

- * Test Condition : 100KHz , 1Vrms , 25°C Ambient
- * Isat: DC current that will cause L to drop approximately 35%.
- * Irms: DC current that will cause an approximate ΔT of 40°C.

TAMH series provides exceptionally high current carrying capability and very low DC resistance.

Applications

- * DC/DC converters, etc
- * Power supply for VTRs
- * LCD televisions, Lighting

Operating & Storage Condition

- * Operating Temp Stand Type: -40 to +125°C
- * Storage Temp Stand Type: -20 to +35°C
- * Storage Life Time: 12 months @25°C, RH 70%

Test Equipment

- * HP4284A, HP42841A-L, IDC, Q, RDC
- * HP8753D NETWORK ANALYZER-SRF

Standard Atmospheric Conditions

- * Ambient Temp : 20+/-15°C
- * Relative Humidity : 65±20%

