

TCDS Series (Rev. 1.0)



Features

- * RoHS compliant
- * Available in magnetic shielding
- * Low DC resistance
- * Suitable for large currents
- * Ideal for DC-DC converter inductor applications
- * Available on tape and reel for automatic surface mounting

Product Identification

TCDS 418 - 100 M
 1 2 3 4

1. Product Code
2. Size Code
3. Inductance: 10uH
4. Tolerance: M=±20%, N=±30%

Applications

- * DC/DC converters, etc
- * Power supply for VTRs
- * OA equipment
- * LCD televisions/ Notebook PCs
- * Portable communication devices

Operating & Storage Condition

- * Operating Temp :Stand Type:-40 to +85°C
- * Storage Temp : Stand Type -40 to +85°C
- * Storage Life Time :12 Months @25°C,RH 65%

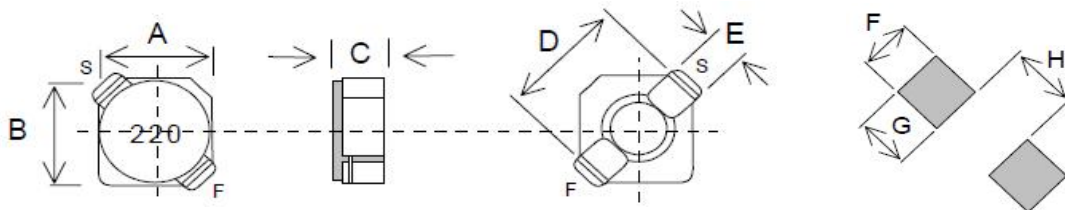
Test Equipment

- * HP4284A,HP42841A-L,IDC,Q,RDC
- * HP8753D NETWORK ANALYZER-SRF

Standard Atmospheric Conditions

- * Ambient Temp : 20+/-15°C
- * Relative Humidity : 65+/-20%

Dimension & Recommended PAD Layout: [mm]



Size Code	A(max.)	B(max.)	C(max.)	D(ref.)	E(ref.)	F(ref.)	G(ref.)	H(ref.)
310	3.3	3.3	1.1	4.4	1.3	1.4	1.3	1.7
312	3.3	3.3	1.3	4.4	1.3	1.4	1.3	1.7
315	3.3	3.3	1.6	4.4	1.3	1.4	1.3	1.7
320	3.2	3.2	2.0	4.4	1.3	1.4	1.3	1.7
418	4.2	4.2	1.8	5.5	1.5	1.4	1.4	2.4



TCDS Series (Rev. 1.0)

Electrical Characteristics

L Code	L (uH)	DCR (mΩ) max. / IDC (A) max.											
		310		312		315		320		320LD		418	
R20	0.20							22	5.35				
R36	0.36							29	4.62				
R56	0.56							33	3.75				
R82	0.82							39	2.91				
1R0	1.00					58	1.95					43	1.68
1R1	1.10							43	2.50				
1R5	1.50			68	0.90	63	1.80					52	1.55
1R7	1.70							44	1.85				
1R8	1.80					75	1.65						
2R2	2.20	144	0.73	98	0.78	94	1.50	60	1.60	41	0.85	72	1.20
2R7	2.70					106	1.35						
3R3	3.30	195	63.00	123	0.60	125	1.20	86	1.45	54	0.75	85	1.10
3R9	3.90					138	1.10						
4R7	4.70	288	0.54	170	0.50	169	1.00	140	1.20	78	0.63	105	0.90
5R6	5.60					188	0.95						
6R3	6.30							160	1.05				
6R8	6.80	425	0.45	260	0.44	213	0.85			106	0.52	170	0.73
8R2	8.20	475	0.41			281	0.80	245	0.85				
100	10.00	538	0.36	400	0.35	294	0.70			180	0.43	210	0.55
120	12.00					394	0.62						
150	15.00	750	0.31					345	0.70	220	0.35	295	0.45
220	22.00	1560	0.26	748	0.22	781	0.40			320	0.30	430	0.40
330	33.00	1680	0.21							460	0.24	660	0.32
470	47.00									660	0.20	1000	0.26
680	68.00					2760	0.25						

* Test Freq.(L): @100KHz/1.0v.

* IDC: ΔT=40℃Typ

* Tolerance: M=±20%, N=±30%; TCDS-320 (0.2~1.1uH N=±35%; 1.7~15uH N=±30%).



深圳市长进科技有限公司 SHENZHEN CHANGJIN TECHNOLOGY CO., LTD.

Specifications subject to change without any prior notice due to reasons such as upgrading.

Revised 2022/07/06